



RHS

Royal Horticultural Halls



Lindley Hall

Wedding Brochure 2023

Contents

Congratulations on your engagement	4
Our venue	6
Testimonials	8
Package inclusions & costs	10
Venue capacities	12
Venue dimensions	13
Ceremony & reception floor plans	14
Catering partners	18
Production partners	21





Congratulations on your engagement

Thank you for your recent wedding enquiry, we are delighted that you are interested in holding your wedding at Lindley Hall.

Lindley Hall is a fully licenced, Grade II listed building, able to host both civil and religious ceremonies. Every wedding is unique and our inclusive wedding package, along with our wide range of preferred suppliers, means Lindley Hall has everything you need to create a truly unforgettable day.

Our dedicated team are on hand throughout to offer a wealth of experience and knowledge to turn your wedding dreams into reality.

We look forward to helping you create a day filled with memories to last a lifetime.





Our venue

A stunning central London venue, Lindley Hall at the Royal Horticultural Halls (RHH) provides an ideal setting to say “I do”.

Characterised by its Edwardian features and stunning glass vaulted ceiling, this Grade II listed space provides a breathtaking backdrop for all wedding celebrations.

Lindley Hall is a fully licenced venue, able to host civil marriages, partnerships and religious ceremonies.

The RHH Operations Co-ordinators will guide you through every step, and our in-house AV equipment and furniture will help set the scene to get your celebrations into full swing.

To help your day run smoothly, we highly recommend using a professional wedding planner to assist with the organisation of your day.

With expansive floor space for seated dining, drinks reception, a dance floor and a flexible approach to planning, Lindley Hall is a truly versatile venue for your dream wedding day.





Testimonials

“We had a fantastic wedding reception at RHH. We could not fault anything with the professional service we received from the staff on our event day and everything went very smoothly. Everybody has been complimenting the venue and for our theme, it was the perfect blank canvas to be able to transform.”

“Thank you for your help and professionalism throughout the journey. You were always available to us and were a godsend in making everything so easy for us. We really appreciate the effort and you always went the extra mile to accommodate us. Thank you again!”





Package inclusions & costs

Fees for exclusive hire

- Mon – Fri: £11,500 + VAT
- Sat & Sun: £12,000 + VAT
- A fixed electrics charge depending on event requirements

Hire time

- Mon – Sat: 9am – midnight
- Sun: 9am – 11pm

Please note, all event set up and de-rig should be factored into the above hire times. Additional hours can be purchased for a fee.

What's included

- Exclusive use of Lindley Hall event space
- 1 x security steward
- Lighting package: in-house intelligent lighting system & uplighters
- Venue furniture: banqueting chairs, trestle tables & 5ft6 round tables
- Dedicated RHH operational staff
- Fully staffed cloakroom
- 1 x cleaner for duration of tenancy
- Staging
- Private bridal room (weekend only)





Venue capacities

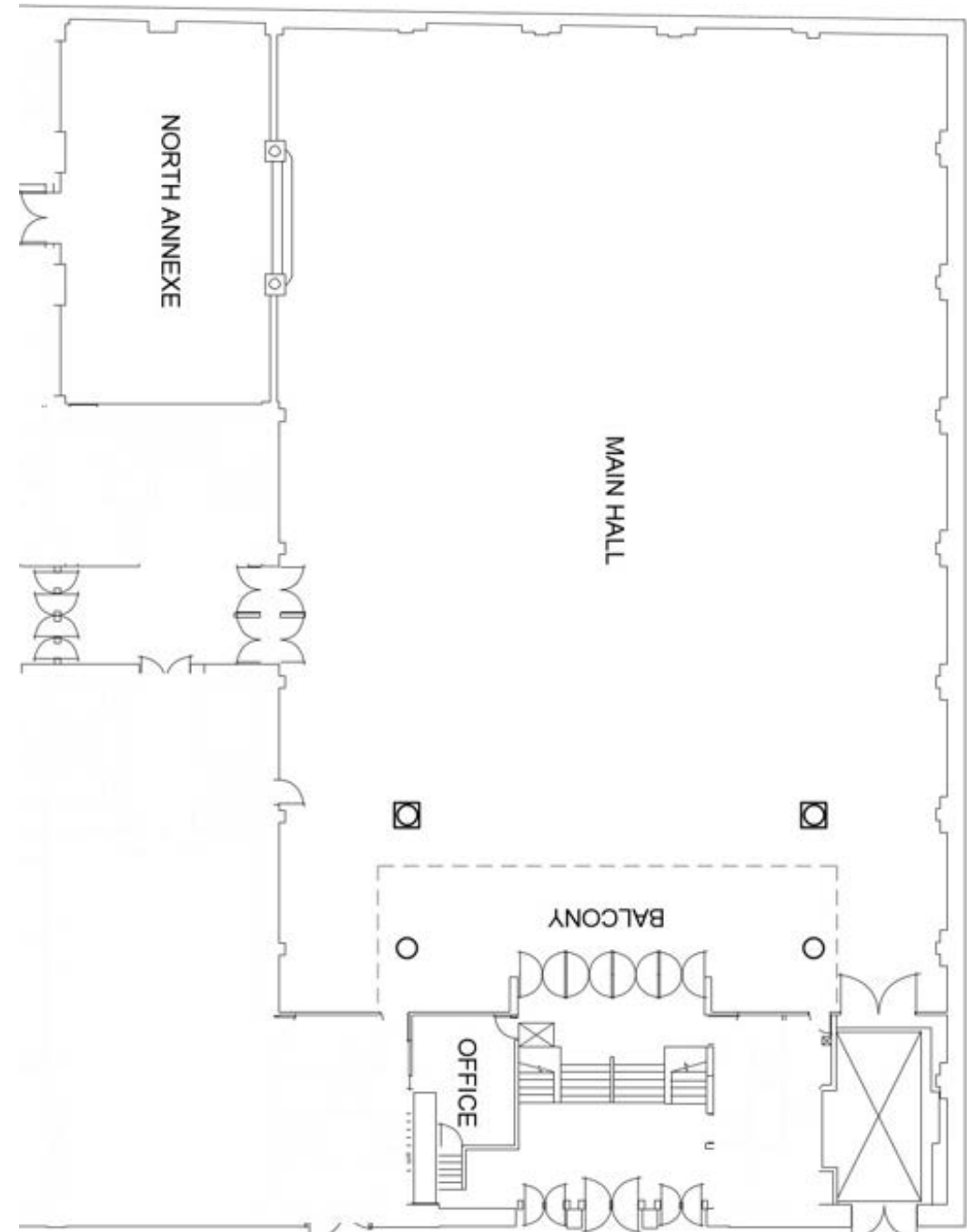
SET UP TYPE	MAXIMUM GUEST NUMBERS	ADDITIONAL NOTES
CEREMONY	600	Based on a formal seated ceremony with a stage
CEREMONY AND DINNER DANCE	300	Based on a seated ceremony into a dinner dance (with a turn around)
DRINKS RECEPTION AND DINNER DANCE	350	Based on a matching standing area and dinner dance
DINNER DANCE	480	Based on a formal dinner dance with no drinks reception
STANDING RECEPTION	650	Based on an informal standing space with occasional seating

*Please note, these are our maximum capacities.



Venue dimensions

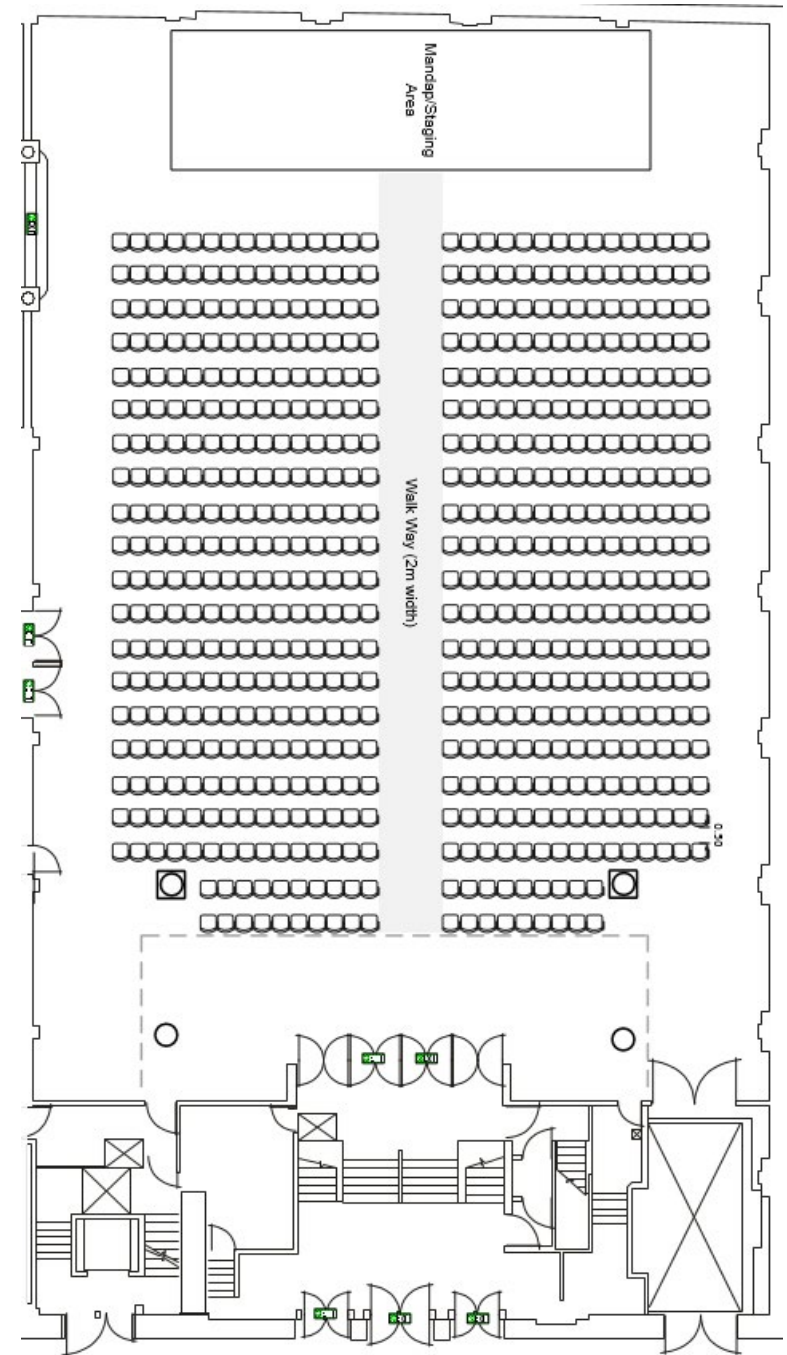
SPACE NAME	DIMENSIONS
MAIN HALL	Length: 36m Width: 22m Ceiling Height: 14.75m
NORTH ANNEXE	Length: 36m Width: 22m Ceiling Height: 14.75m
MEZZANINE BALCONY	Length: 16m Width: 4.5m Ceiling Height: 2.3m
ORGANISERS OFFICE	Length: 2.96m Width: 2.71m Ceiling Height: 2.25m
BASEMENT KITCHEN (image not shown)	Length: 8m Width: 7.7m Ceiling Height: 1.95m Walk-in Fridge: 4.6m x 2.7m



Ceremony & reception floor plans

Maximum capacity ceremony:

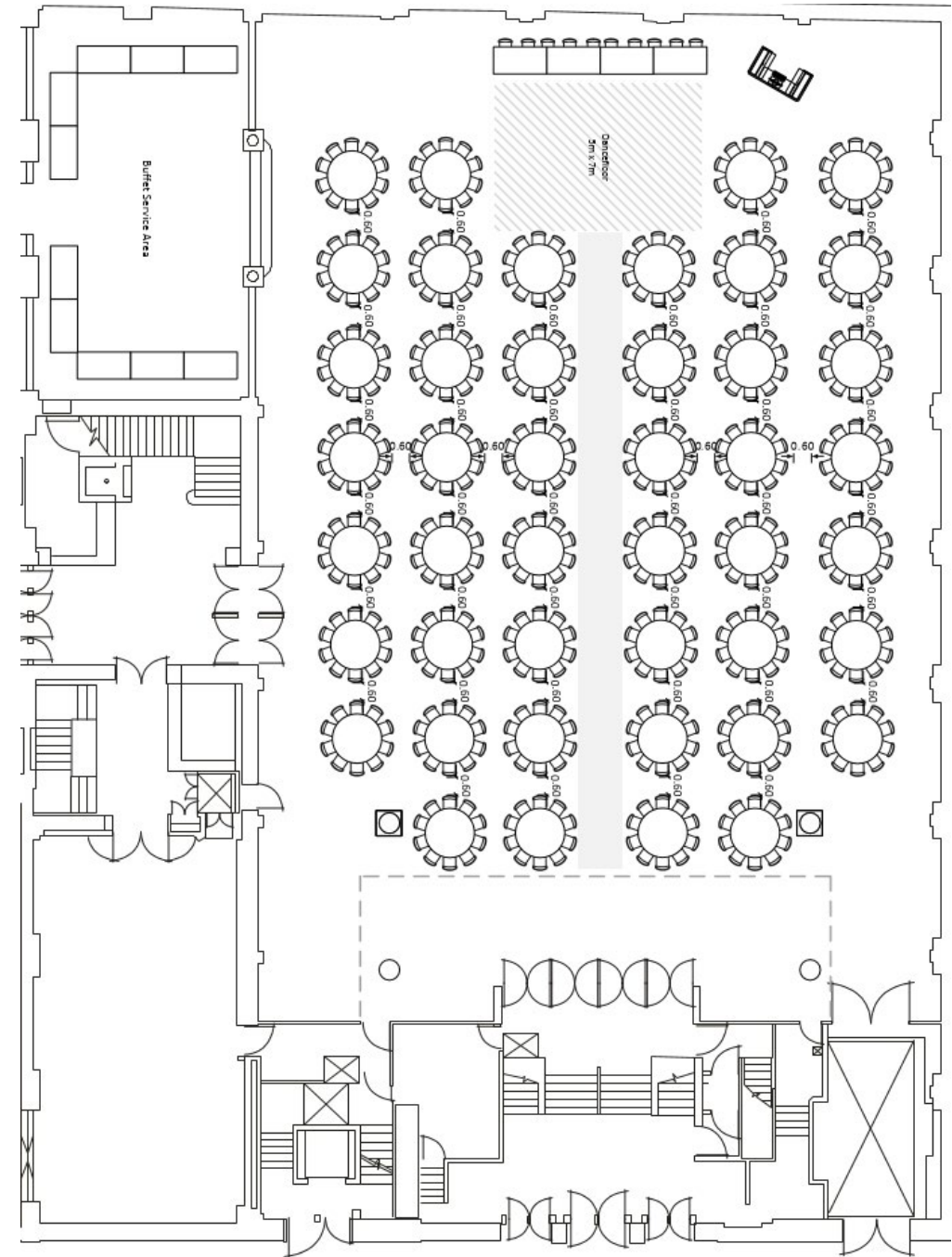
600 seated guests with large staging area & aisle.



Ceremony & reception floor plans

Maximum capacity dinner dance:

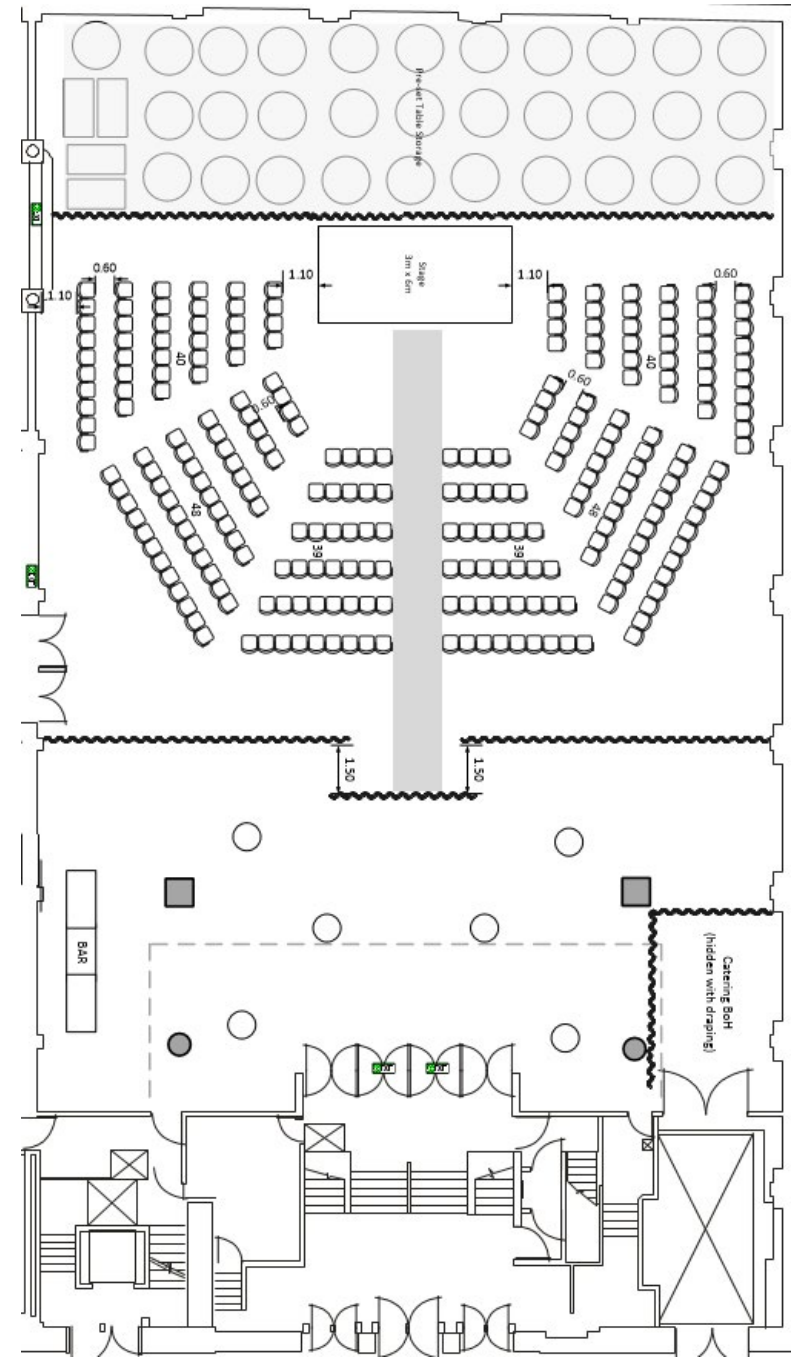
440 guests on round tables, 10 guests on top table with buffet area, DJ and dancefloor.



Ceremony & reception floor plans

Ceremony:

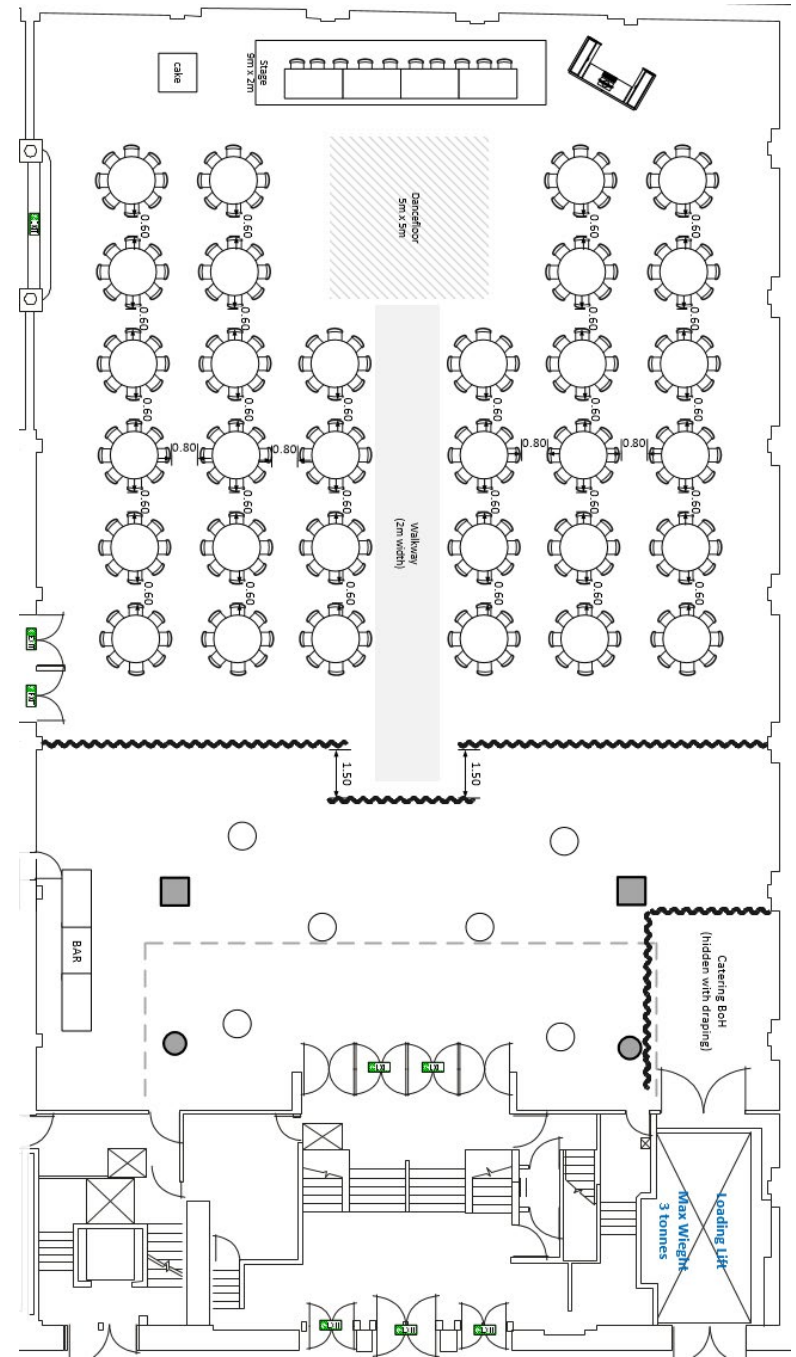
250-300 guests with staging, drinks reception and concealed table storage.



Ceremony & reception floor plans

Reception:

250-300 guests on round tables and top table, with DJ, dancefloor and drinks reception. (Please note: an approximate time of two hours required to reset ceremony area for dinner)





RHS

Royal Horticultural Halls



Our partners

Catering partners

The following caterers have been carefully selected and pre-approved to cater at the Royal Horticultural Halls.

Our diverse range of catering partners can create a menu to complement any theme or special requirement. From Asian to Italian, we have chosen a variety of cuisines and specialists to ease the pressure of your event planning process.

Please click on each caterers logo below for more information.

CONTEMPORARY CATERING



LUXURY CATERING



Catering partners

CONFERENCE CATERING



ASIAN CATERING



AFRICAN AND CARIBBEAN CATERING



KOSHER CATERING



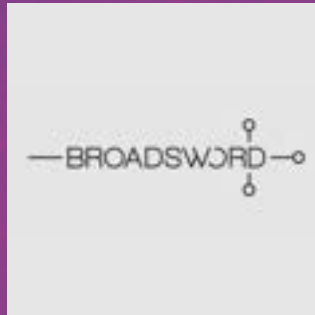
Production/entertainment partners

The following supplier list has been hand-picked to provide the very best services for your event.

Our meticulous tender process ensures that only the highest quality and trusted event professionals are on hand to turn your creative vision in to reality.

Please click on each caterers logo below for more information.

AV/PRODUCTION



AUDIO VISUAL



Production/entertainment partners

BRANDING



CREATING PROGRAMMING/CONTENT



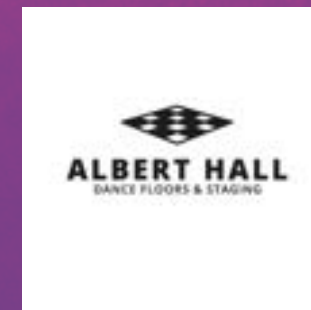
ENTERTAINMENT



EVENT DESIGN/TECHNOLOGY SERVICES

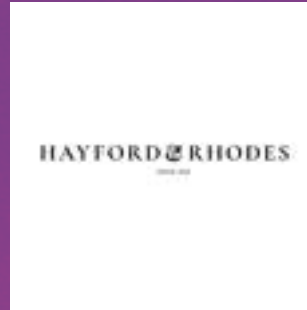


FLOORING/SHELL SCHEME



Production/entertainment partners

FLORISTS



FURNITURE HIRE



PHOTOGRAPHERS



THEMING

